



Licensed Real Estate Broker

“We Close Deals...That’s The Bottom Line”

**Route 15 Northbound  
Jefferson Township, New Jersey**

**Town:** Jefferson Township  
**County:** Morris  
**Block:** 273  
**Lot:** 2.4

**Location:** Route 15 Northbound  
Adjacent to Pathmark Shopping Plaza  
Jefferson Twp, Morris County, New Jersey

**For Sale:** Asking \$450,000

**Frontage:** Approx. 485 ft along Route 15

**Taxes:** Tax Year 2001' = \$6,994

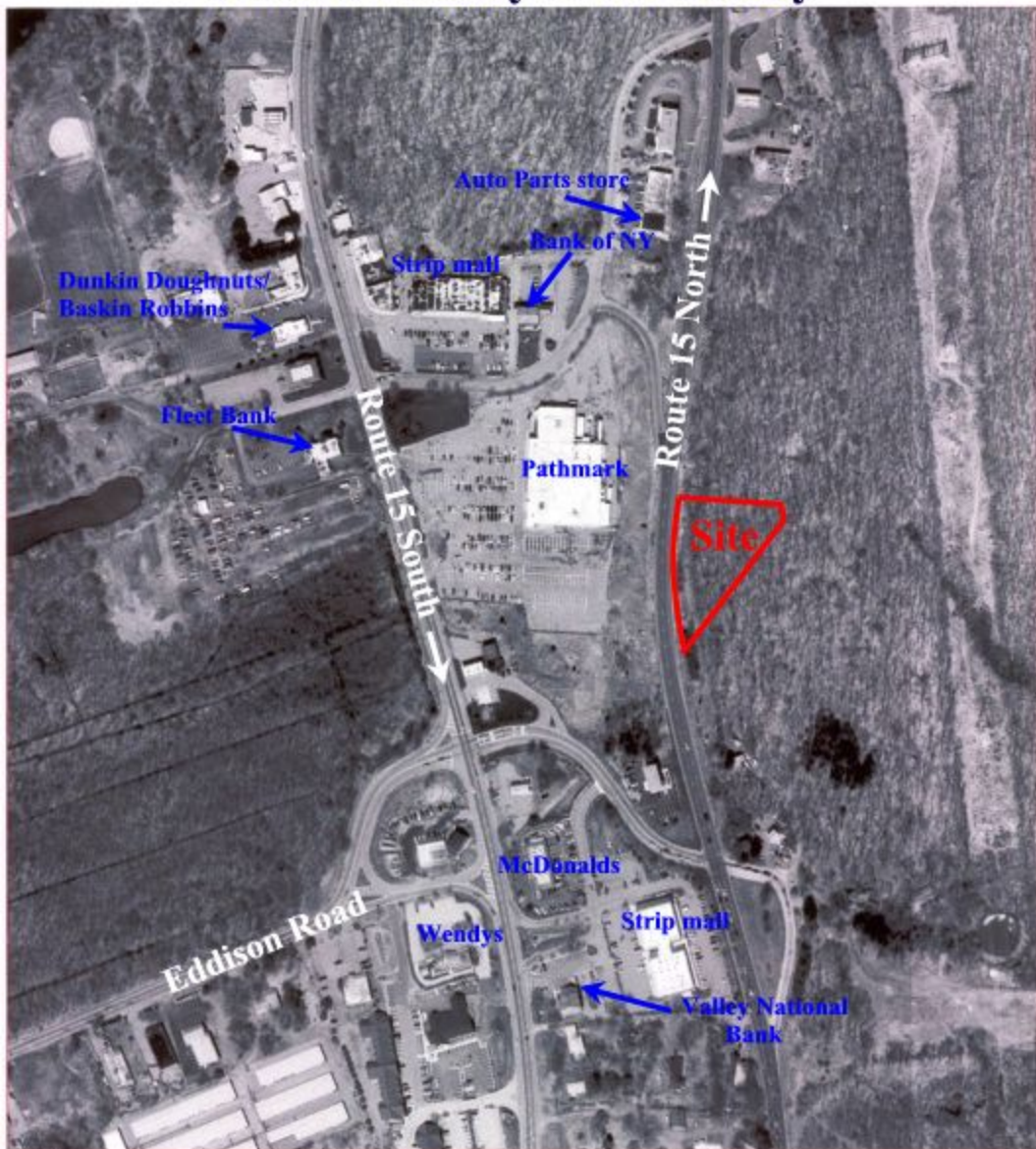
**Demographics:** Excellent visibility, high traffic, new subdivision (400+ homes) in process within 1 mile.

**Current Zoning:** C-2/Principal uses: Retail Stores, Banks or Savings institutions, Personal service stores or studios, Restaurants, fast food restaurants or taverns, Theaters (excluding outdoor drive-in theater), Professional offices, Marinas, Public and private fire and rescue squad stations, Shopping center.

**Major area Tenants:** Pathmark, Valley National Bank, Bank of New York, Fleet bank, Dunkin Doughnuts, McDonalds, Wendys, Baskin Robbins, plus local retailers.

**LICENSED REAL ESTATE BROKER**  
[www.EagleAmericanRealty.com](http://www.EagleAmericanRealty.com)

# Route 15 North / Jefferson Twp Morris County / New Jersey



Eagle American Realty, Inc.  
Licensed Real Estate Broker  
410 Route 10 West Suite 213  
Ledgewood, New Jersey 07852

Tel: 973-598-1500  
Fax: 973-927-9974  
EagleAmericanRealty.com

All information is from sources deemed reliable  
and some is subject to errors, omissions, change of price,  
terms rentals, prior sale and withdrawal without notice.

# Route 15 North Jefferson Township/Morris County, New Jersey



Eagle American Realty, Inc.  
Licensed Real Estate Broker  
410 Route 10 West/ Suite 213  
Ledgewood, New Jersey 07852

Tel: 973-598-1500  
Fax: 973-927-9974  
EagleAmericanRealty.com

All information is from sources deemed reliable but is not guaranteed and is subject to errors, omissions, change of price and / or terms, prior sale, lease or withdrawal without notice. Broker is not liable for the accuracy of any information provided herein, and all information should be independently verified prior to entering into any binding agreements.