



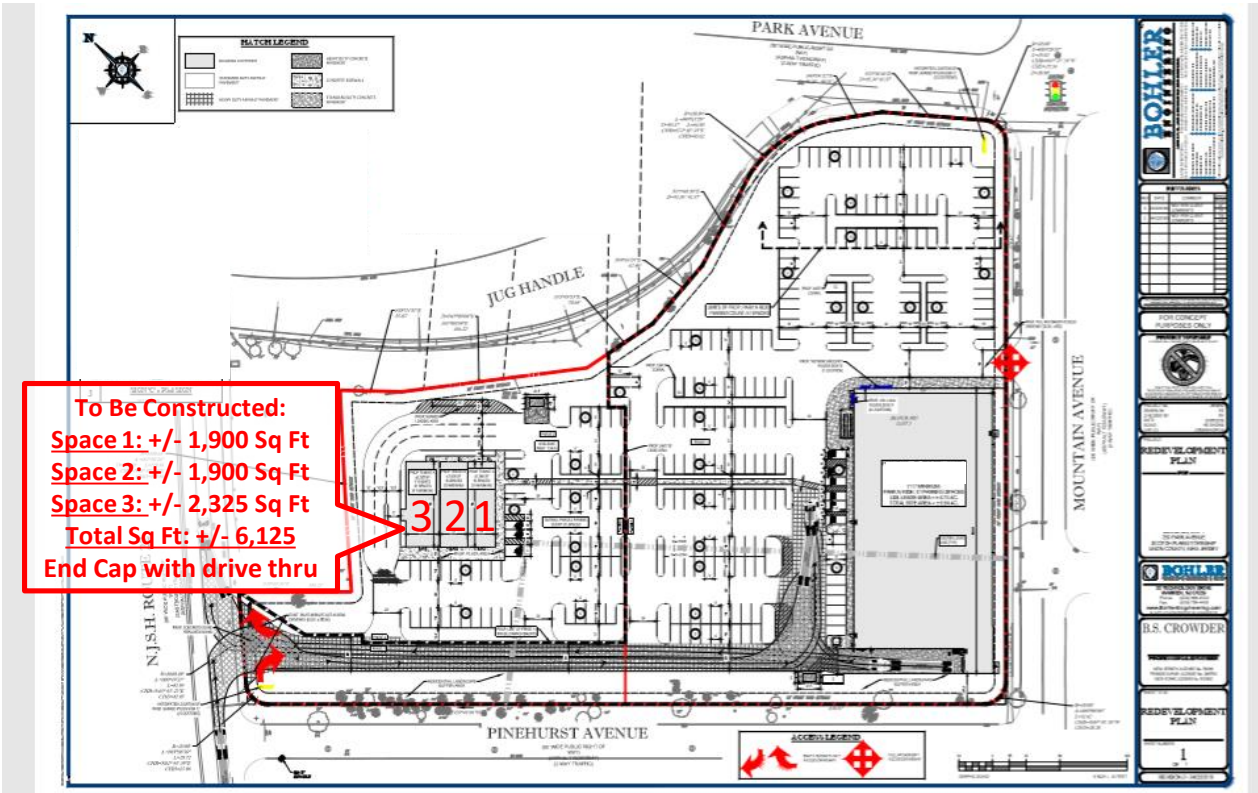
Eagle Realty USA

Experience Counts!

Scotch Plains (Union County, NJ) 250 Park Avenue

FOR LEASE

Aerial Link: <https://goo.gl/maps/gGYdEk1J6JicNnwV8>



- To Be Constructed:
 - Space 1: +/- 1,900 Sq Ft
 - Space 2: +/- 1,900 Sq Ft
 - Space 3: +/- 2,325 Sq Ft
 - Total Sq Ft: +/- 6,125
 - End Cap with Drive Thru
- 61 Parking Spaces
- Access to State Route 22 & Mountain Avenue

- Banks in Area: Chase Bank (Coming Soon), TD Bank, Bank of America, PNC Bank, Investors Bank, Wells Fargo Bank and Valley National Bank
- Demographics:

| Radius: | Population: | Households: | Median Income: |
|---------|-------------|-------------|----------------|
| 1 Mile | 13,044 | 4,802 | \$160,319.00 |
| 3 Mile | 99,064 | 34,818 | \$111,200.00 |
| 5 Mile | 236,946 | 85,115 | \$112,161.00 |

Source: Demographix

Eagle Realty USA

Licensed Real Estate Broker

3 Laurel Drive, Suite A

Flanders, NJ 07836

“We Close Deals...That’s the Bottom Line”

For More Information Please Contact:

Gary J. Drechsel, Sr.

Member-Broker of Record

Phone 973.598.1500 Ext 11

Mobile 973.713.7700

Gary@EagleRealtyUSA.net

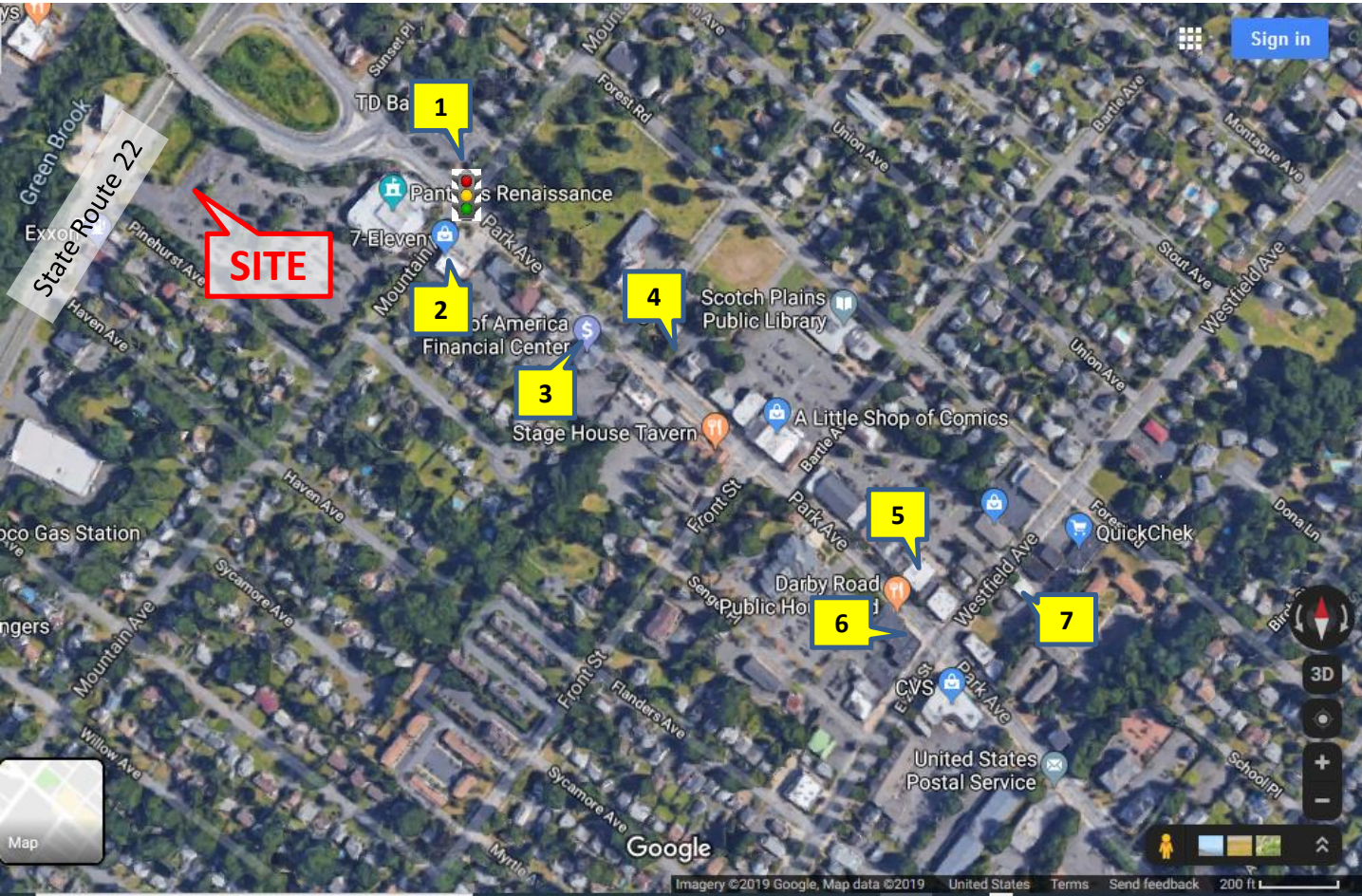
All information is from sources deemed reliable but is not guaranteed and is subject to errors, omissions, change of price and / or terms, prior sale, lease or withdrawal without notice. Broker is not liable for the accuracy of any information provided herein, and all information should be independently verified prior to entering into any binding agreements.



AERIAL VIEW OF BANKS IN AREA

Scotch Plains (Union County, NJ) 250 Scotch Plains

FOR LEASE



| # | Name | Address | City | 2018 Deposits |
|---|----------------------|-----------------------|---------------|------------------|
| 1 | TD Bank | 245 Park Avenue | Scotch Plains | \$119,181,000.00 |
| 2 | Chase Bank | 302 Park Avenue | Scotch Plains | Coming Soon |
| 3 | Bank of America | 336 Park Avenue | Scotch Plains | \$118,880,000.00 |
| 4 | PNC Bank | 361 Park Avenue | Scotch Plains | \$87,761,000.00 |
| 5 | Investors Bank | 437 Park Avenue | Scotch Plains | \$96,849,000.00 |
| 6 | Wells Fargo Bank | 460 Park Avenue | Scotch Plains | \$107,606,000.00 |
| 7 | Valley National Bank | 1922 Westfield Avenue | Scotch Plains | \$85,878,000.00 |

Source: FDIC 2018 Summary of Deposits

All information is from sources deemed reliable but is not guaranteed and is subject to errors, omissions, change of price and / or terms, prior sale, lease or withdrawal without notice. Broker is not liable for the accuracy of any information provided herein, and all information should be independently verified prior to entering into any binding agreements.

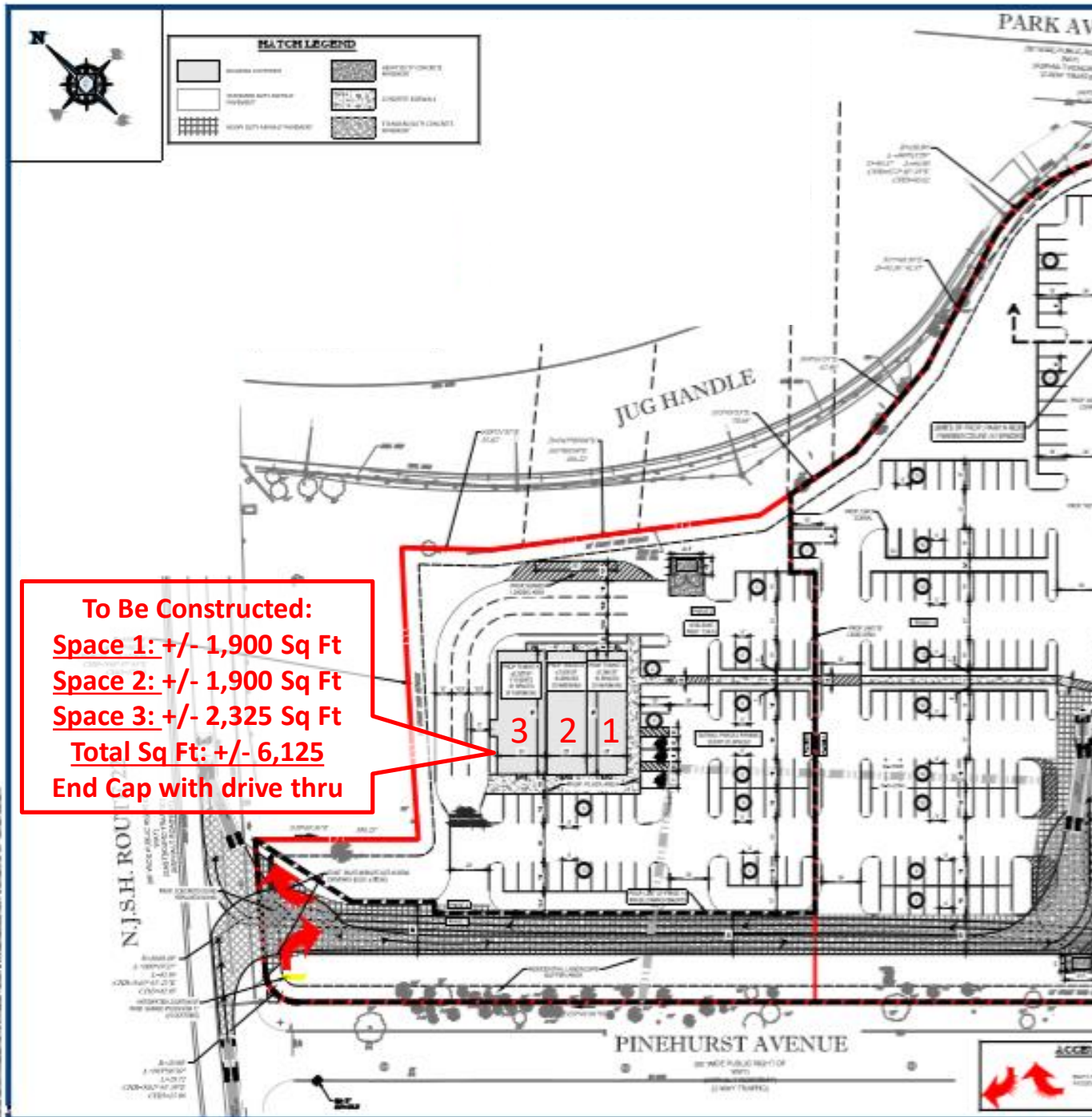


SITE PLAN CLOSE UP

Scotch Plains (Union County, NJ) 250 Scotch Plains

FOR LEASE

Aerial Link: <https://goo.gl/maps/gGYdEk1J6JicNnwV8>



All information is from sources deemed reliable but is not guaranteed and is subject to errors, omissions, change of price and / or terms, prior sale, lease or withdrawal without notice. Broker is not liable for the accuracy of any information provided herein, and all information should be independently verified prior to entering into any binding agreements.

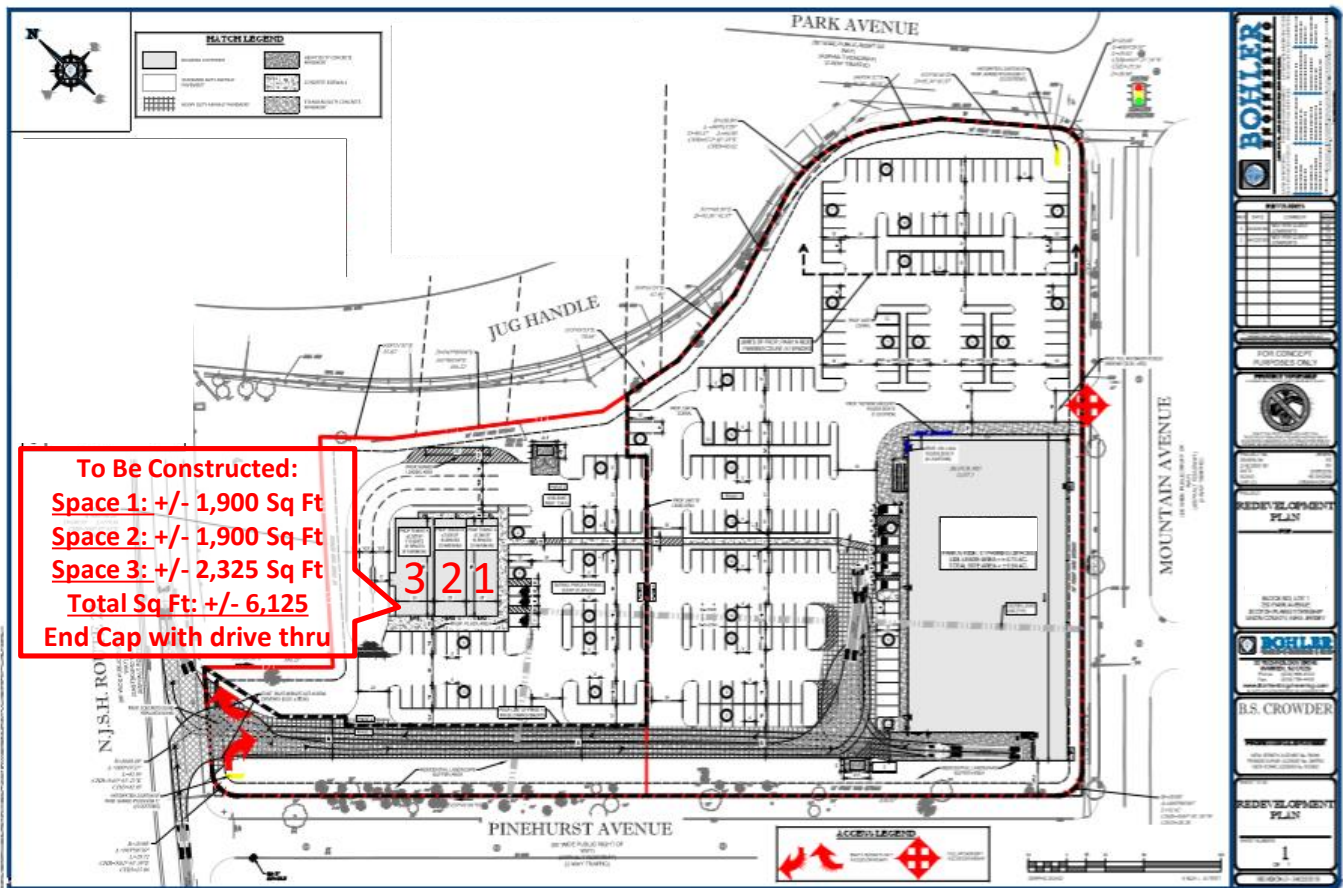


SITE PLAN

Scotch Plains (Union County, NJ) 250 Scotch Plains

FOR LEASE

Aerial Link: <https://goo.gl/maps/gGYdEk1J6JicNnwV8>



All information is from sources deemed reliable but is not guaranteed and is subject to errors, omissions, change of price and / or terms, prior sale, lease or withdrawal without notice. Broker is not liable for the accuracy of any information provided herein, and all information should be independently verified prior to entering into any binding agreements.