



Eagle Realty USA

Experience Counts!

Riverdale (Morris County, NJ) 79 Newark Pompton Turnpike

FOR SALE

Aerial Link: <https://goo.gl/maps/PXjC9c24W5HHjKQP9>



- Vacant Land with Previous Approvals for ± 19,000 SF (3 Story) Office Building
- Close proximity to Route 23 & Route 287
- City water, sewer and natural gas in street
- Property Size: ± 1.08 Acres

- Zoned: PO1
- Zoning Code Link:

<https://www.ecode360.com/attachment/RI0995/RI0995-168a%20Schedule%20A%20Permitted%20Uses.pdf>

- Traffic Count: 9,923 AADT 2014 NJDOT

Eagle Realty USA

Licensed Real Estate Broker

3 Laurel Drive, Suite A

Flanders, NJ 07836

“We Close Deals... That’s the Bottom Line”

For More Information Please Contact:

Gregory R. Giannini

Sales-Associate

Phone: 973.598.1500 Ext 16

Mobile: 973.229.9228

Greg@EagleRealtyUSA.net

Gary J. Drechsel, Sr.

Member-Broker of Record

Phone: 973.598.1500 Ext 11

Mobile: 973.713.7700

Gary@EagleRealtyUSA.net

All information is from sources deemed reliable but is not guaranteed and is subject to errors, omissions, change of price and / or terms, prior sale, lease or withdrawal without notice. Broker is not liable for the accuracy of any information provided herein, and all information should be independently verified prior to entering into any binding agreements.

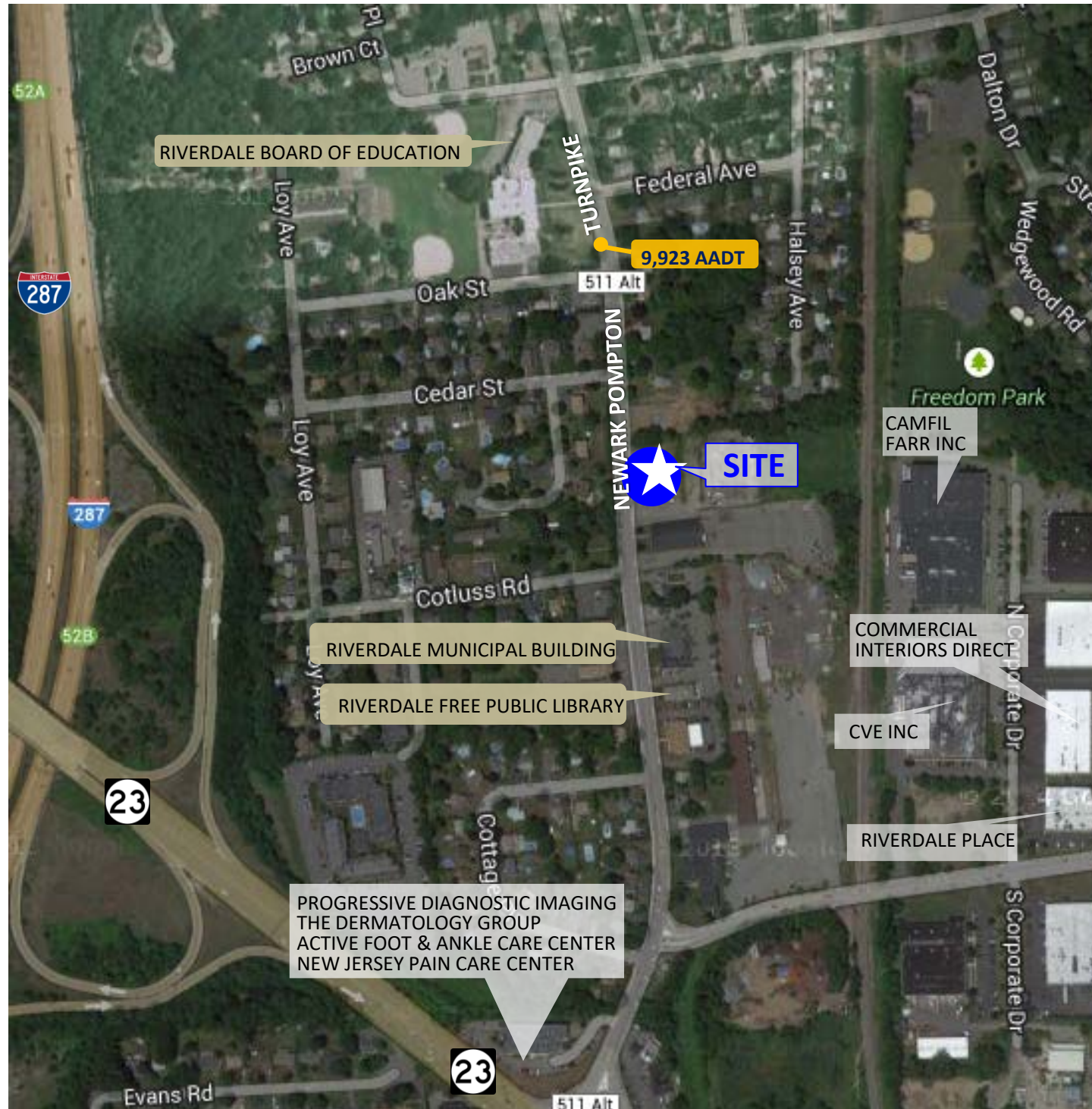


AERIAL

Riverdale (Morris County, NJ) 79 Newark Pompton Turnpike

FOR SALE

Aerial Link: <https://goo.gl/maps/PXjC9c24W5HHjKQP9>



All information is from sources deemed reliable but is not guaranteed and is subject to errors, omissions, change of price and / or terms, prior sale, lease or withdrawal without notice. Broker is not liable for the accuracy of any information provided herein, and all information should be independently verified prior to entering into any binding agreements.

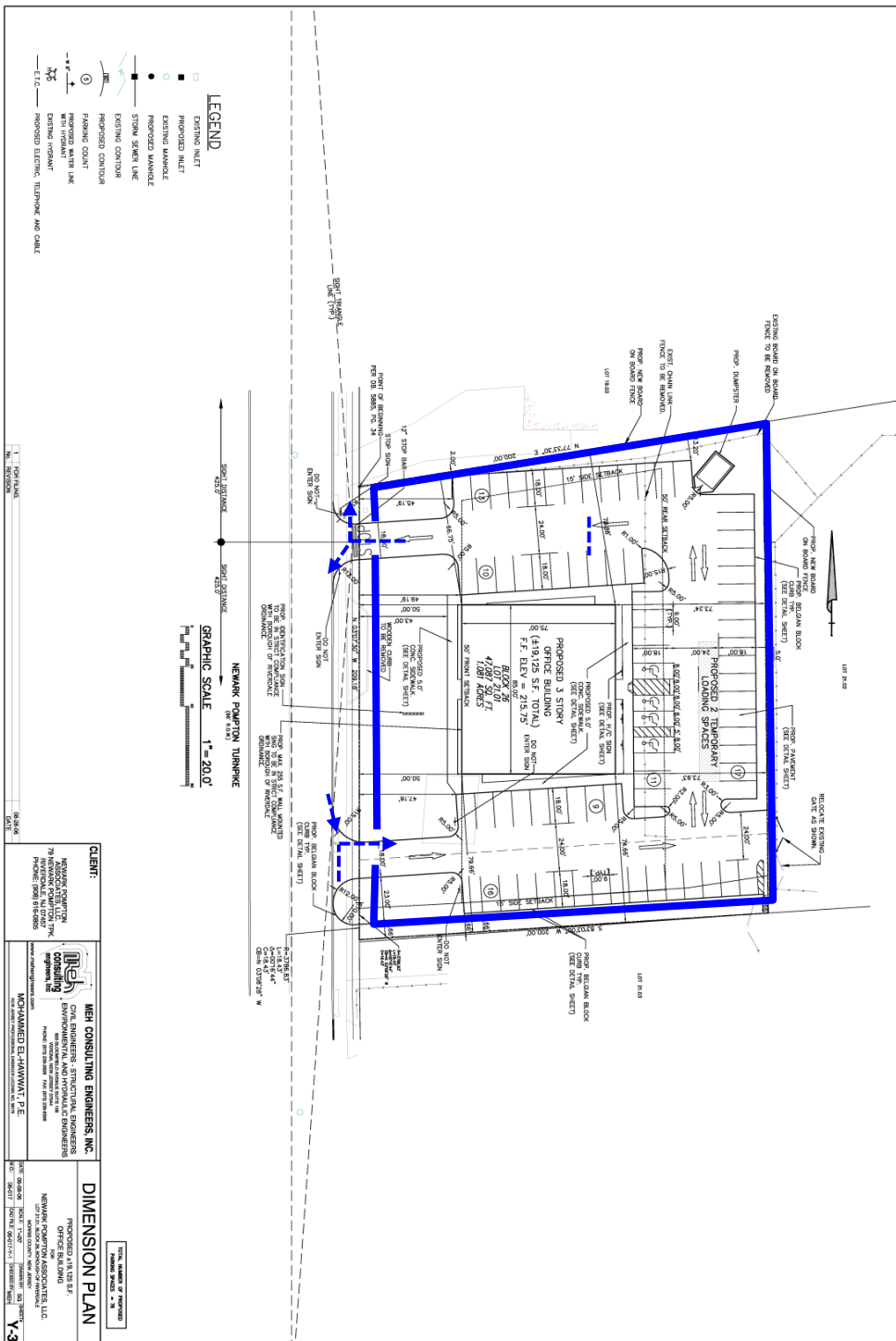


DIMENSION PLAN

Riverdale (Morris County, NJ) 79 Newark Pompton Turnpike

FOR SALE

Aerial Link: <https://goo.gl/maps/PXjC9c24W5HHjKQP9>



All information is from sources deemed reliable but is not guaranteed and is subject to errors, omissions, change of price and / or terms, prior sale, lease or withdrawal without notice. Broker is not liable for the accuracy of any information provided herein, and all information should be independently verified prior to entering into any binding agreements.